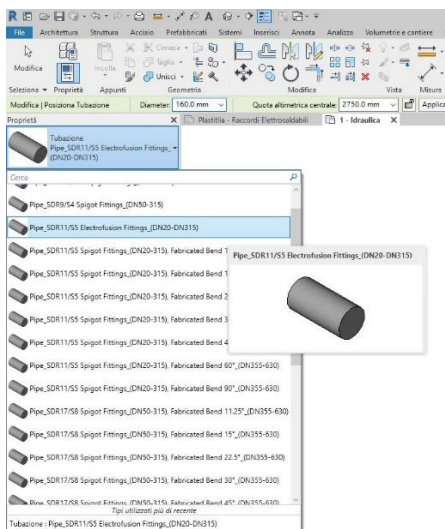


Once you have uploaded the Template to your project, click on "Systems", locate "Piping" and then choose between the uploaded pipes for example: "Pipe_SDR11/S5 Electrofusion Fittings_(DN20-DN315)".



All fittings assigned to the pipe and the material will now be in the project and ready for use. Couplers, Valves and Tee 45° can be used by inserting them manually.

To transfer a single fitting with its materials:

If only one product is required, it is possible to copy and paste the desired fitting (in Project Browser > Families > Pipe Fittings) by right-clicking and selecting "Copy to clipboard". Go to the project and paste it (Ctrl-V). Alternatively, again from (Project Browser > Families > Pipe Fittings) choose the desired product by clicking and holding the left mouse button on the fitting and dragging it directly into the project.

To transfer a group of pipe fittings with their materials:

If several products are required, it is possible to group them together, save them on the PC or server and then upload the group of models into the project.

IMPORTANT NOTE: Request the **UPDATED** product conformity certificates.